



HCSPharma

IMAGING PLATFORM FOR DERMO-COSMETOLOGY ASSESSMENT

- ✓ Support a claim through scientific data and cell imaging
- ✓ Understand in vitro mechanisms of action of your active
- ✓ Discover the innovative benefits of your skin care active
- ✓ Identify new claims for existing products

HCS Pharma offers a panel of validated cell-based assays allowing :

- Quantification of key phenotypic and molecular events
- Evaluation of potential benefits of your actives.



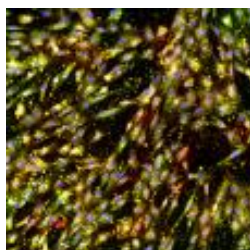
HCS PHARMA

Fully equipped cell culture labs
Automation & cell imaging lab

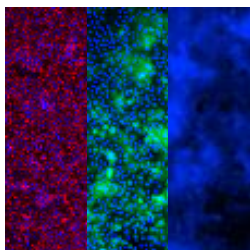
- 1 Micro XLS (MDS) in SA
- 2 Sciclone ALH3000 in SA
- 2 ImageXpress Micro confocal systems
- UV irradiation system
- Microscope system compatible with live cell imaging (5 channels)



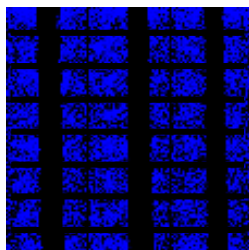
AVAILABLE MODELS



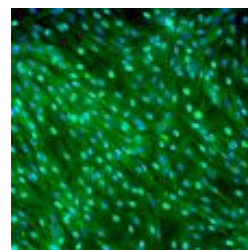
Anti-aging



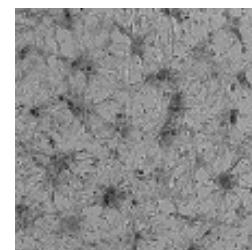
Anti-oxidant



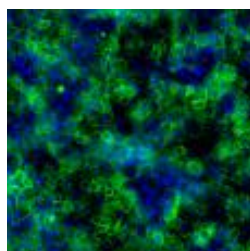
Wound healing



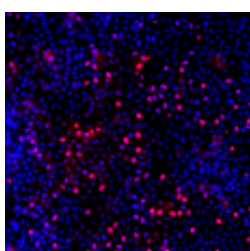
Anti-redness



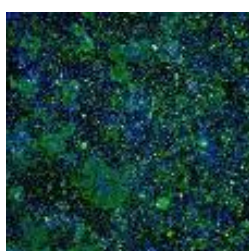
Pigmentation



Moisturizing potential



Toxicity



Skin microbiota

Custom development :



In **2D** or
In **3D** with

BioMIMESYS®



HCS Pharma

IMAGING PLATFORM FOR DERMO-COSMETOLOGY ASSESSMENT

AVAILABLE CELL TYPES



Keratinocytes



Fibroblasts



Adipocytes



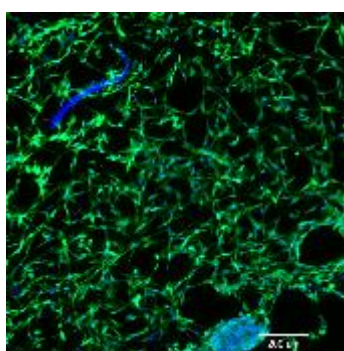
Melanocytes



Sebocytes

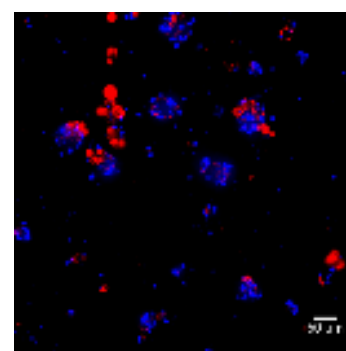
AVAILABLE 3D CELL CULTURE MATRICES

Fibroblasts in



Nuclei, live cells

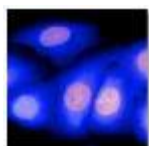
Adipocytes in



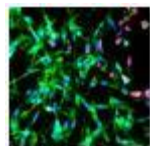
Nuclei, lipid droplets

AVAILABLE READOUTS

Proliferation, apoptosis, differentiation

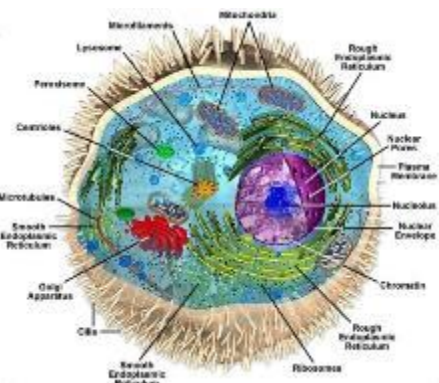


Hoechst, EdU
Cells : NHEK

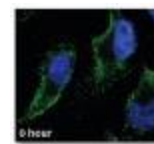


Hoechst, EdU
Cells : NHEK

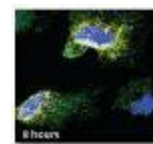
Cell motility tracking (video)



mRNA analysis



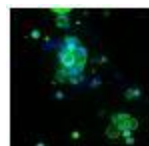
0 hour



8 hours

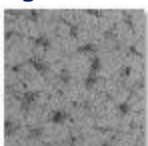
Hoechst, GAPDH, IL-8 ; inducer: TNFα
Cells : HeLa ; Affymetrix ViewRNA ISH assay kit

Vacuoles/vesicles



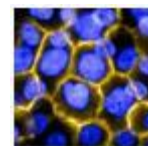
Hoechst, Neutral Lipids
Cells : Sebocytes

Pigmentation

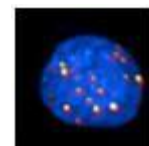


Melanin
Cells : Melanocytes

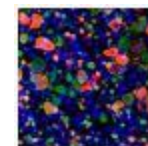
Protein analysis



Hoechst, AQP3
Cells : NHEK

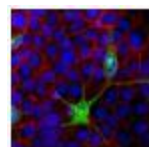


Hoechst, 53BP1, γH2AX
Cells : NHEK

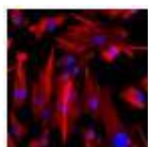


Hoechst, Keratin 10,
Keratin 14
Cells : NHEK

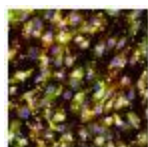
Cell structures : organelles, cytoskeleton, ...



Hoechst, Actin, GP100
Cells : HaCaT and iPSC
derived melanocytes

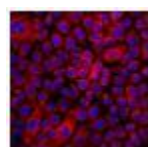


Hoechst, Vimentin
Cells : NHDF

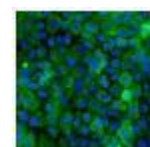


Hoechst, Collagen 1,
ProCollagen 1, Elastin
Cells : NHDF

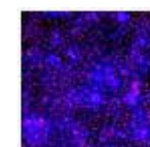
Stress: ROS, mitochondrial potential, inflammation



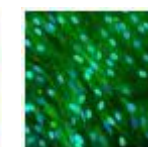
Hoechst, ROS
Cells : NHEK



Hoechst, Lipid
peroxidation
Cells : NHEK



NucRed, GSH
Cells : NHEK



Hoechst, NFκB
Cells : NHDF

Check our individual flyers for more details on each model, or visit our website